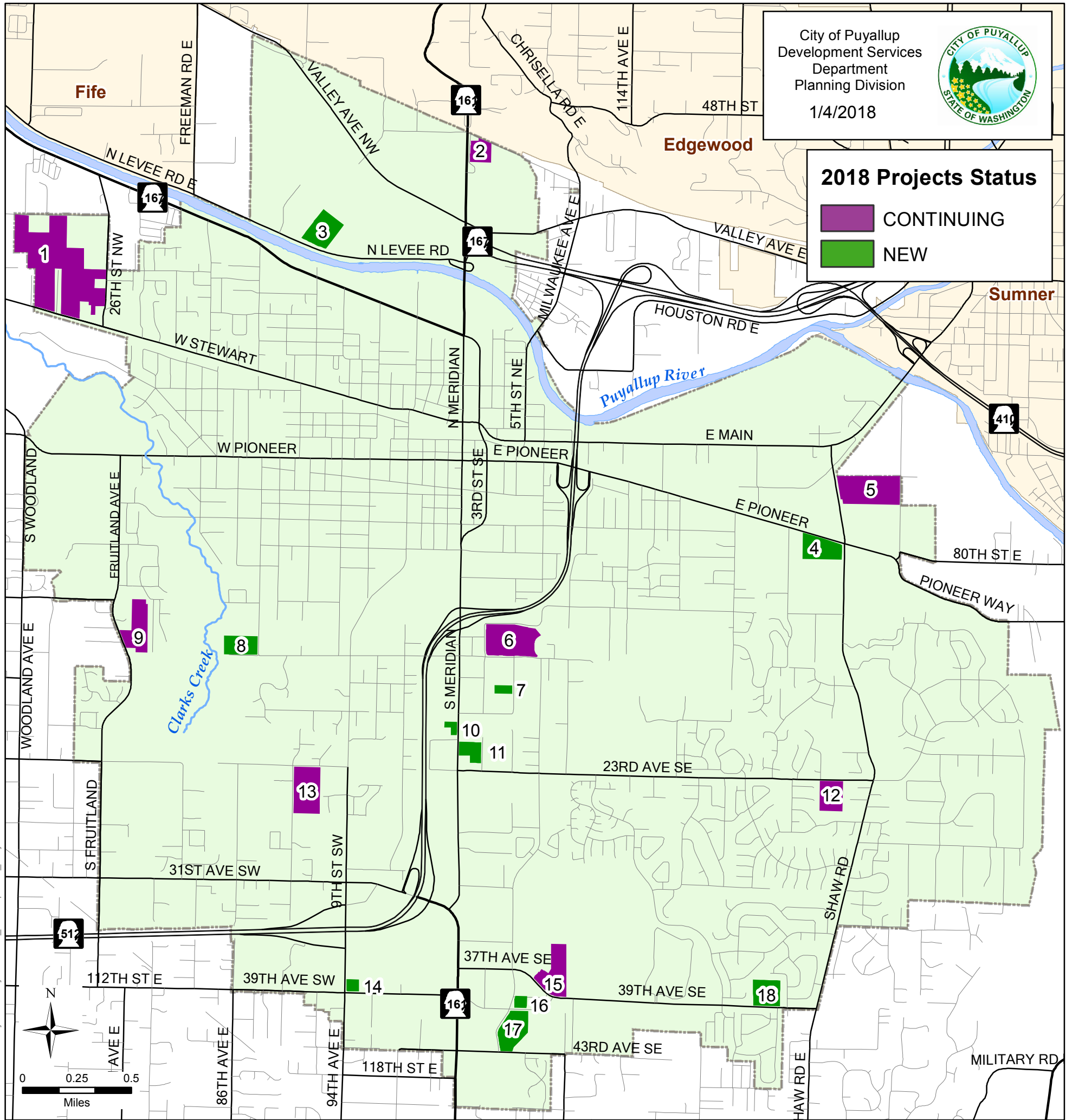


City of Puyallup 2018 Major Development Projects



City of Puyallup
Development Services
Department
Planning Division
1/4/2018



2018 Projects Status

CONTINUING

NEW

Path: H:\vrbrown4\MajorDev\Projects\2018_Development_Project.mxd

#	Name	Description	Status
1	Stewart Crossing	Continued construction of major single family project, including proposed phase 8	Continuing
2	Todd Road Distribution Center	New 120,000 square foot industrial building on a 6.4 acre property	Continuing
3	Olympic Eagle Distributing addition	32,000 square foot expansion to an existing 140,000 square foot warehouse	New
4	Pioneer Crossing Retail Center	New 83,000 square foot retail center, on approximately 5 acres	New
5	Viking Industrial	445,000 square foot industrial building on a 23 acre site	Continuing
6	Good Samaritan Hospital upgrades	Misc. facility improvements, including build-out of floors 7-8 and other internal remodels	Continuing
7	Latitude Medical Office	A 41,000 square foot new medical office building on a 3.2 acre site	New
8	Puyallup Hatchery remodel	Major upgrade to fish-rearing areas and other hatchery facilities	New
9	Fruitland Ridge	33 lot single-family residential subdivision	Continuing
10	Huntington Apartments	A 38 unit multi-family residential complex	New
11	Cascadia Memory Care	47,000 square foot, 66 bed memory care on 3.1 acres	New
12	Sully's Glen	28 unit single-family residential plat on 9.4 acres	Continuing
13	Malone Plat	Initial site construction of 34 single-family residential lots on a 17 acre site	Continuing
14	La Quinta Hotel	New 4 story, 101 room hotel proposed on 1.6 acres	New
15	Wesley Homes	Major senior housing complex consisting of a 75,000 square foot assisted living facility and 70 separate "brownstone" units	Continuing
16	CPFR new Station 72	18,000 square foot fire station building	New
17	Affinity Senior Housing/ RJ Memory Care	Two separate projects on adjacent sites: 168 unit independent living senior units/ 72 bed memory care facility	New
18	Sunrise Elementary School reconstruction	81,000 square foot school building on existing Sunrise Elementary site	New

NOTE: THIS IS ONLY A PARTIAL LIST OF DEVELOPMENT PROJECTS EXPECTED THROUGHOUT THE CITY IN 2018

The map features are approximate and are intended only to provide an indication of said feature. Additional areas that have not been mapped may be present. This is not a survey. Orthophotos and other data may not align. The County assumes no liability for variations ascertained by actual survey. ALL DATA IS EXPRESSLY PROVIDED 'AS IS' AND 'WITH ALL FAULTS'. The County makes no warranty of fitness for a particular purpose.